



BYD P6C-30 Series-3BB

235W 240W 245W 250W 255W



17.6%

Average cell efficiency up to 17.6%
Excellent optical performance

0.5W

Positive tolerance 0.5W
Reliability for output performance

12 Years

12 years for product
25 years linear Warranty

Grid

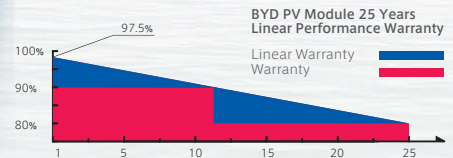
Residential roof top systems
On/Off-grid commercial systems
On/Off-grid utility systems

3rd

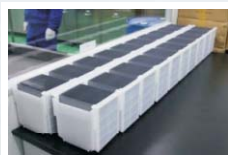
TUV Salt corrosion resistance test
TUV Ammonia corrosion resistance test
5400Pa for Snow Load Test
2400Pa for Wind Load Test

Certification

IEC 61215 (Edition 2005), IEC 61730,
ISO9001:2008, ISO14001:2004



Production Process



Wafer Production



Cell Production



Module Production



Module

About BYD

BYD (HK:1211), one of the world's top PV manufacturers, produces from wafer to module, committing to high quality sustainable products and continuous improvement. Integrating with Electrical Vehicles and Battery Energy Storage technology makes BYD the world-leading solution provider from energy generating to consumption and storage.

New Technology



NES

A high technology that is widely used in BYD photovoltaic products, increasing the average cell efficiency up to 17.6%

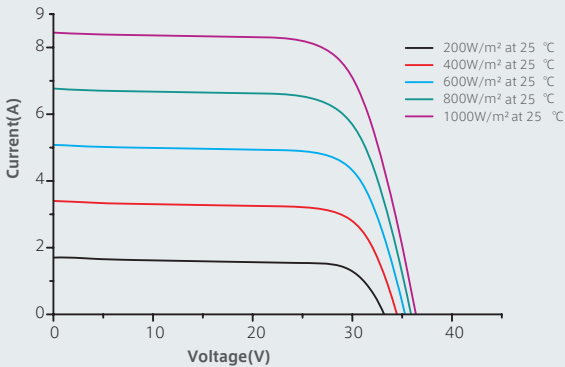
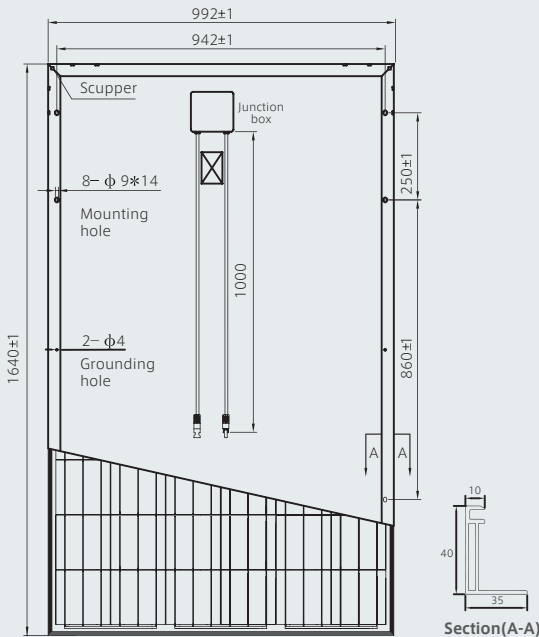
BYD COMPANY LIMITED Headquarter

Add: No.3009, BYD Road, Pingshan, Shenzhen, 518118, P.R. China
Tel: +86-755-8988 8888
Fax: +86-755-8420 2222
Email: bydpv@byd.com
Http://www.byd.com.cn

BYD P6C-30 Series-3BB

Build Your Dreams

235W 240W 245W 250W 255W



Mechanical Specifications

Cell	Polycrystalline Silicon solar cells 156mm * 156 mm / 6 inch
No. of Cells	60 (6 * 10) pcses
Dimension of Module	1640 mm * 992 mm * 40 mm / 64.6 inch * 39.1 inch * 1.6 inch
Weight	18.9kg / 41.67 lbs
Front Glass	3.2 mm tempered glass with AR Coating
Frame	Anodized aluminum alloy
Junction Box	IP65
Plug Connector	IP67
Bypass-Diodes	6 pcses / 3 pcses
Type of Connector	MC4 or MC4-compatible
Cable Section Area	4 mm ² / 0.0062 Sq in
Cable Length	2 * 1000 mm / 2 * 39.4 inch

Temperature Coefficients

Nominal Operating Cell Temperature (NOCT)	45°C± 2°C
Short-Circuit Current Temperature Coefficient	0.059%/°C
Open-Circuit Voltage Temperature Coefficient	-0.32%/°C
Peak Power Temperature Coefficient	-0.43%/°C

Package Information

Package	40' HC
Pcs / Pallet	25
Pallet / Container	28
Pcs / Container	700

BYD P6C-30 Series Electrical Specification

STC						
Item	Module	BYD 235P6C-30	BYD 240P6C-30	BYD 245P6C-30	BYD 250P6C-30	BYD 255P6C-30
Open Circuit Voltage (Voc)		36.83 V	37.14 V	37.45 V	37.76 V	38.07 V
Maximum Operating Voltage (Vmp)		29.27 V	29.57 V	29.85 V	30.13 V	30.40 V
Short Circuit Current (Isc)		8.57 A	8.65 A	8.73 A	8.81 A	8.89 A
Maximum Operating Current (Imp)		8.03 A	8.12 A	8.21 A	8.30 A	8.39 A
Maximum Power in STC (Pmax)		235 Wp	240 Wp	245 Wp	250 Wp	255 Wp
Module Efficiency		14.44%	14.75%	15.06%	15.37%	15.67%
Operating Temperature						-40°C ~ 85°C
Max. Fuse Current Rating						15A
Maximum System Voltage						1000 VDC(IEC) / 600 VDC (UL)
Power Tolerance						0~5W
Application Classes						Class A

STC: IRRADIANCE 1000W/m², Module Temperature 25°C, AM=1.5 Ave. efficiency reduction of 4.5% at 200W/m²

NOCT						
Item	Module	BYD 235P6C-30	BYD 240P6C-30	BYD 245P6C-30	BYD 250P6C-30	BYD 255P6C-30
Open Circuit Voltage (Voc)		33.84 V	34.14 V	34.45 V	34.74 V	34.99 V
Maximum Operating Voltage (Vmp)		26.69 V	26.99 V	27.27 V	27.57 V	27.86 V
Short Circuit Current (Isc)		6.96 A	7.02 A	7.07 A	7.12 A	7.17 A
Maximum Operating Current (Imp)		6.40 A	6.47 A	6.53 A	6.58 A	6.62 A
Maximum Power in NOCT (Pmax)		170.8 Wp	174.6 Wp	178.1 Wp	181.4 Wp	184.4 Wp

NOCT: open-circuit module operation temperature at 800W/m² irradiance, 20° C ambient temperature, 1m/s wind speed.